

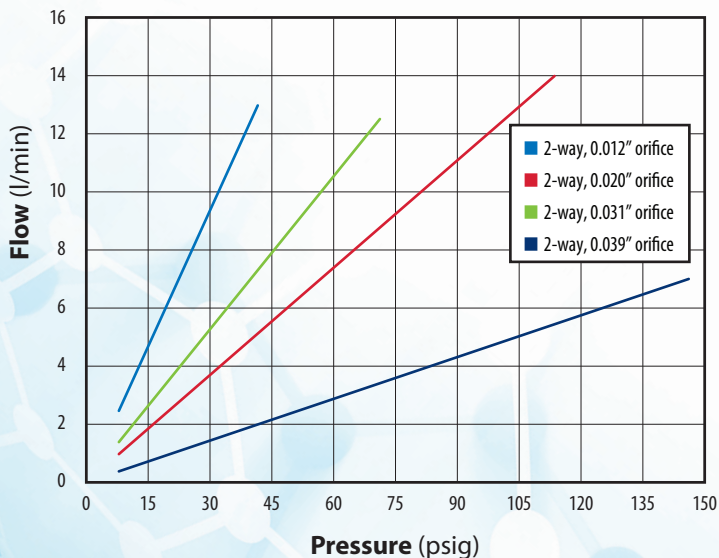
## SV SERIES ELECTRONIC VALVES



These direct actuating valves offer an extremely fast response time for accurate dosing of minute volumes. Due to very low moving weights, they are extremely quiet and emit very low vibration. Subminiature size and low energy consumption make them ideal for transportable and mobile systems, among others.

Standard products offered will fit the needs of most applications, however this series can be fully customized according to the user's unique requirements. Consult Clippard with your specific application.

**TYPICAL FLOW**

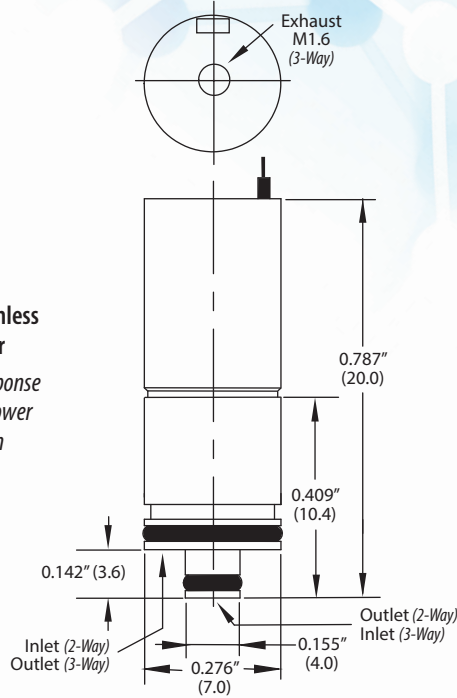
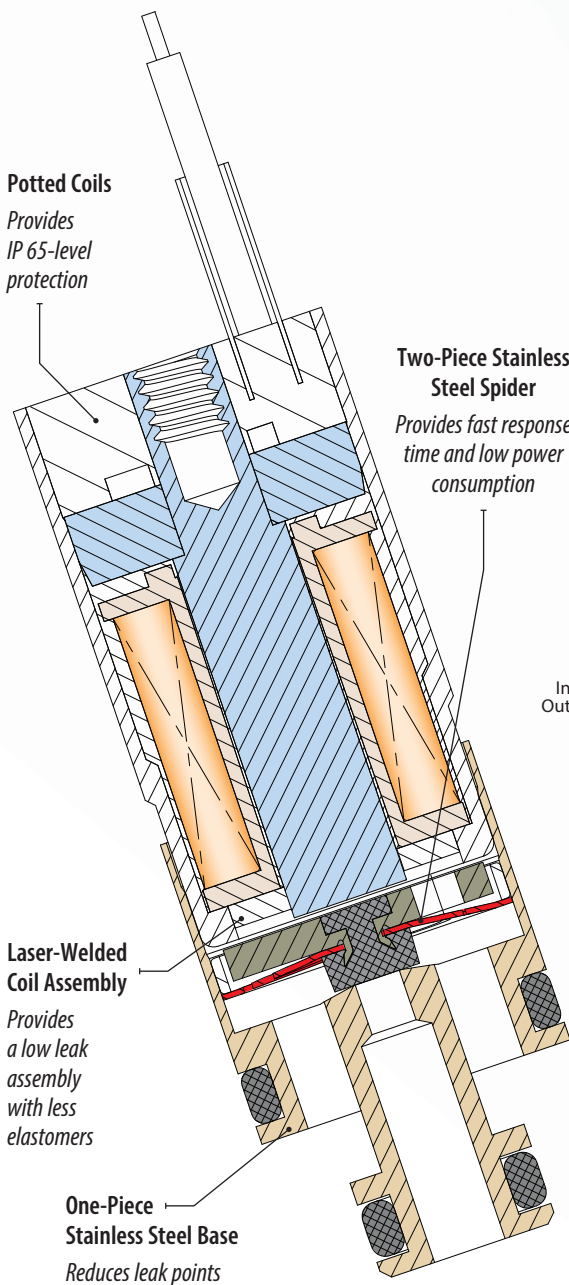


<b>Connection</b>	3" wire leads
<b>Cycle Life</b>	>100,000,000
<b>Filtration</b>	10 micron ( <i>recommended</i> )
<b>Function</b>	2-way or 3-way, normally-closed
<b>Leak Rate</b>	1.0 sccm
<b>Material, Body</b>	Stainless steel
<b>Material, Seals</b>	FKM standard, EPDM available <sup>1</sup>
<b>Material, Spring</b>	302 stainless steel
<b>Material, Wetted</b>	303, 430, and 302 stainless steel
<b>Max. Flow</b>	7 l/min @ 145 psig (10 bar), 14 l/min @ 115 psig (8 bar), 12.5 l/min @ 72 psig (5 bar), 13 l/min @ 45 psig (3 bar)
<b>Max. psig</b>	145 (10 bar)
<b>Medium</b>	Air, water, gas, and compatible fluids
<b>Mount</b>	Cartridge
<b>Number of Ports</b>	2 or 3
<b>Operating Pressure</b>	0 to 145 psig (10 bar)
<b>Operating Range</b>	95-105% of rated power
<b>Operating Temperature</b>	41 to 122°F (5 to 50°C)
<b>Orifice</b>	0.012", 0.020", 0.031", 0.039" (0.3, 0.5, 0.8, 1.0 mm)
<b>Port, Exhaust</b>	M1.6
<b>Port, Inlet</b>	No thread
<b>Port, Outlet</b>	No thread
<b>Response Time</b>	<5 ms
<b>Voltage</b>	12 or 24 VDC
<b>Voltage Operating Range</b>	90 to 105%
<b>Wattage</b>	0.5 to 1.2 watts
<b>More Details</b>	<a href="http://clippard.com/link/sv-series">clippard.com/link/sv-series</a>

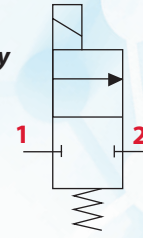
<sup>1</sup>Minimum order quantity required

*Does your application have requirements beyond what is listed? Contact Clippard to discuss how this valve can be modified to meet your specific needs.*

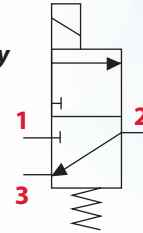




**2-Way**



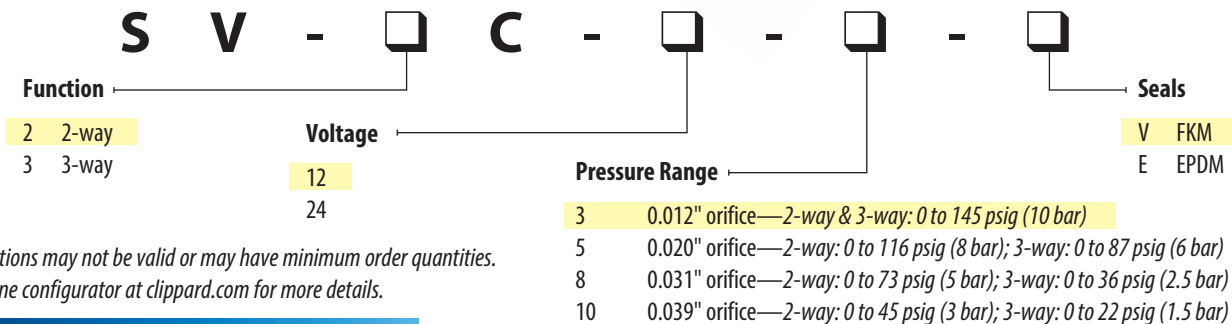
**3-Way**



Dimensions shown are in inches (millimeters in parentheses).  
Visit [clippard.com](http://clippard.com) for more detailed 2D and 3D drawings.

- Extremely small dead volume
- Low vibration and noise
- Fast response time
- Low energy consumption
- Exceptional repeatability and reliability
- Compact and ideal for sub-assemblies
- 100% tested
- Serialized production cell

## ORDERING INFORMATION



Some configurations may not be valid or may have minimum order quantities.  
Consult the online configurator at [clippard.com](http://clippard.com) for more details.

### ACCESSORIES

- SVM-01\* Single-station manifold, #10-32
- M-SVM-01\* Single-station manifold, M5
- SVM-MC Mounting clip & screw

\*Also available in stainless steel (add -SS to part number)

**Example Part Number:**  
**SV-2C-12-3-V**

For more info, scan the QR code or visit  
[clippard.com/link/sv-series](http://clippard.com/link/sv-series)

